



# INFRARED GARAGE HEATING SYSTEMS

RESIDENTIAL • WORKSHOPS  
INDUSTRIAL



## A warm welcome.

More than just a place to park the car, heated garages offer additional living space for hobby activities, home businesses, pets, and warm storage.

### Design Features Include:

**Infrared is better:** Calcana's energy-efficient infrared heaters create comfortable waves of warmth by heating surroundings — floors, walls, furniture, even people — instead of heating the air directly, like conventional gas heaters do. Rooms located above or adjacent to a heated garage feel warmer and more comfortable.

**Certified for indoor and outdoor applications:** Vents either through the roof or through the wall, easy to install in practically any residential garage. Comes complete with a thermostat & hanging kit.

**Smart and efficient:** Uses 30-40% less energy than conventional heating systems. Melts snow and ice from vehicles, and keeps the floor warm and dry.

**Slim, narrow dimensions:** Low clearance to combustible requirements. Easy to install in narrow, low overhead clearance locations.

**Flexible:** Various lengths and configurations available; sleek, architectural design. Multiple units can be grouped together to achieve any length required.

**Heavy-duty construction:** High quality stainless steel construction and workmanship eliminates metal fatigue and reflector warp or separation. Eight-sided reflector design will not shift or twist during expansion and contraction. Quiet, draft-free operation.

**Natural gas or propane:** Units available for use with either fuel. Inputs from 40,000 to 75,000 BTUs/hr.

**Easy-light ignition system:** No pilot lights to ignite by hand, no valves to turn, no thermocouples to replace. By using a reliable 3-Try, direct spark, electronic, 100% safety shut off ignition system, units safely and consistently operate in all types of conditions.



Modulating Remote  
Control Panel

Patented  
Performance

## General Specifications

USA Rating (Input: Natural & L.P. Gas) 0-2000' elevation

CAN Rating (Input: Natural & L.P. Gas) 0-4500' elevation

Model	Input	Length
Cal-40A-10	40,000BTU/hr.	10'
Cal-50A-15	50,000BTU/hr.	15'
Cal-75A-20	75,000BTU/hr.	20'

### Gas Pressure at Manifold:

Natural Gas	3.5" W.C.
L.P. Gas	10.5" W.C.
Gas Connection Size	0.5" N.P.T.

### Gas Inlet Pressure:

Gas	Minimum	Maximum
Natural	4.5" W.C.	14.0" W.C.
L.P.	11.5" W.C.	14.0" W.C.

### Electrical Rating:

DSI Ignition  
120v, 60 hz, 1 Amps  
24 volt low voltage thermostat

### Standard Equipment:

Burner control housing is preassembled and prewired, unit comes complete with industry standard gas, electrical and venting connections, balanced air rotor, thermal overload protected motor, visual burner inspection sight glass, combustion and air proving safety switch, 3-try spark ignition control, 100% safety shut off, low voltage thermostat connection, 4" heat treated aluminized combustion tube, aluminum reflector, 4" mild steel radiant heat exchanger, tube couplers, joint/hanger pieces, heat economizer baffle.

### Shipping Weight & Dimensions:

Cal 40A-10' One box: 110 lbs - 162" long x 22" wide x 11" high

Cal 50A-15' One box: 150 lbs - 162" long x 22" wide x 11" high

Cal 75A-20' One box: 160 lbs - 162" long x 22" wide x 11" high

Cal40A-10' 2 piece Construction Two Boxes:

Box One: 27 lbs - 24" long x 18" wide x 11" high

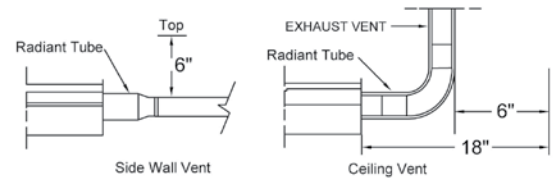
Box Two: 61 lbs - 63" long x 22" wide x 11" high

### Optional Equipment:

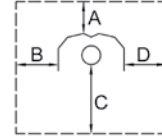
Variable Input Gas Valve	-	Side wall vent kit
4" x 90° Elbow kit	-	Fresh air intake
4" x 180° U-Bend kit	-	4" Vent adapter
3" x 90° Exhaust elbows	-	2 Piece Construction (Cal 40)

## Clearance to Combustibles

### End Clearances (exhaust end)

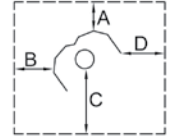


### HORIZONTAL



Standard Reflector

### TILT



(inches) 25° to 45° Tilt

### Installation Type 1

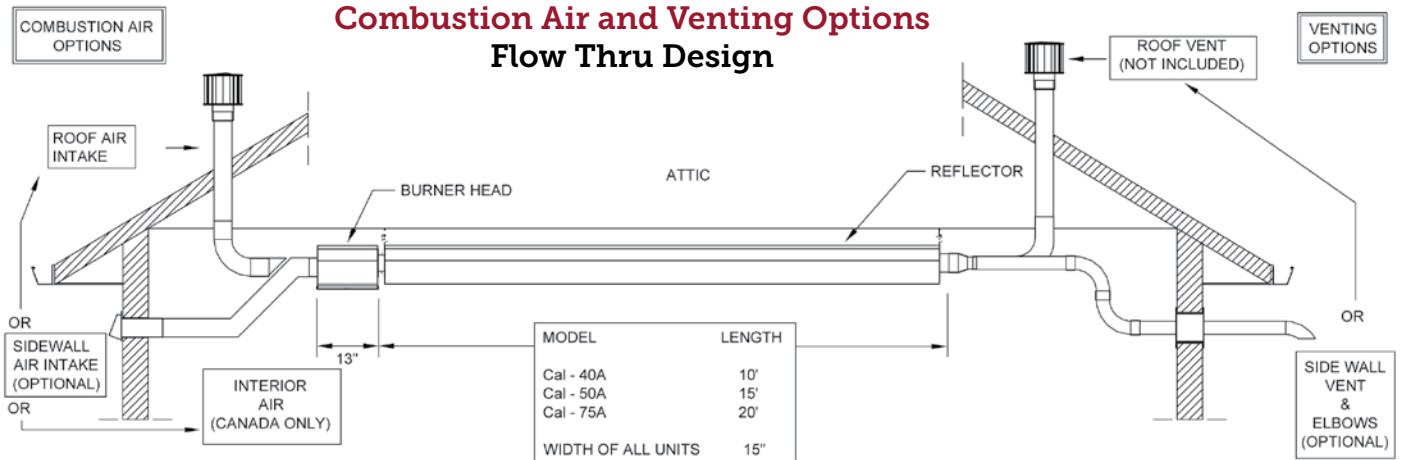
Input	A	B	C	D
40	4	12	36	12
50	4	12	43	12
75	4	15	48	15

### Installation Type 2

Input	A	B	C	D
40	4	4	36	28
50	4	4	40	28
75	4	4	45	31



## Combustion Air and Venting Options Flow Thru Design



© 2022 Calcana Industries Ltd. All rights reserved. No part of this work herein may be reproduced or copied in any form or by any means - graphic, electronic or mechanical, including photocopying, recording, taping or information storage and retrieval systems - without written consent from Calcana Industries Ltd. The information herein is current at the time of printing, but may be subject to change at any time without notice.



1-800-778-6729

[www.calcana.com](http://www.calcana.com) | [www.patioheaterusa.com](http://www.patioheaterusa.com) | [www.patioheatercanada.com](http://www.patioheatercanada.com)

DESIGNED AND MANUFACTURED IN THE USA AND CANADA

### CANADA

Calcana Industries Ltd.

5507 6 Street SE

Calgary, AB Canada T2H 1L6

Tel: 403-777-0808

Fax: 403-777-0807

Email: [sales@calcana.com](mailto:sales@calcana.com)

### USA

Calcana USA Ltd.

30201 County Road 49

Loxley, Alabama USA 36551

Tel: 251-964-4400

Fax: 251-964-4404

Email: [sales@calcana.com](mailto:sales@calcana.com)

### DISTRIBUTED BY